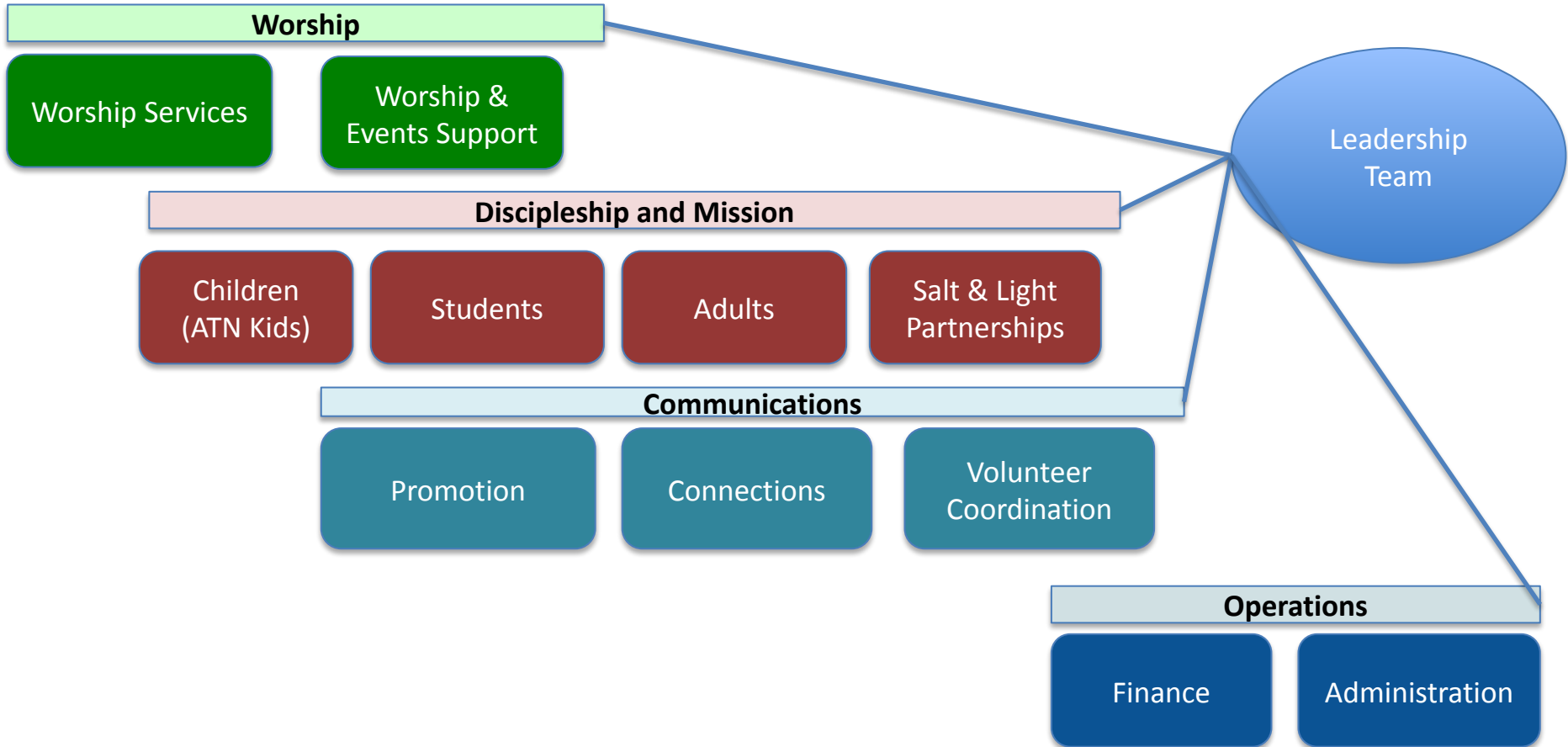


Ministry Constellations and teams...



See individual constellations for team leaders and additional details



Leadership
Team

Worship

Justin Noseworthy

Michael Gorman

Corinne Bonyng

Discipleship and Mission

Kirstin Van Gend

Communications

Lynn Zwagerman

Operations

Jay Zwagerman

Worship
Jack Riley

Worship Services
Doug Fearnside
Justin Noseworthy
James Choi

- Planning
- Instruments
- Vocals
- Sermons
- Liturgy

Worship and Events
Support
Maddie Riley

- Pre Service Setup
- First Impressions
- Post Service Tasks

Discipleship and Mission

Justin Noseworthy and Joan Spjut

Children
(ATN Kids)
Janet Fearnside

- Nursery
- Pre-school
- Elementary
Grades K-6

Students
Maddie Riley

- Middle School
- High School
- College support

Adults
***Open*
(Justin-acting)

- RGR (*Jean Cheng Gorman, John Hanneman, D'Anne Peterson*)
- Small Groups
- Young Adults ministry
- Learning
- Prayer
- Congregation Care (*Ron Kihara*)

Salt & Light
Partnerships
Caroline DePalatis

- Immigrant Families (*Kirsten Van Gend*),
- MHS Resource Center (*Joan Spjut*)
- Homeless Women (*Sheryl Fearnside, Katherine Short*),
- Missionary Support (*Joan Spjut*)
- Other community and global Initiatives (*Stacia Del Prete, Nancy Kelly*)

Communications
Lynn Zwagerman

Promotion
James Choi

- Branding
- Promotion
- Social Media
- Print Media
- Web Site
- Connections Support and information

Connections
Janet Fearnside

- Visitor Information
- Involvement Coaching, Guidance
- Event Planning support
- Information systems & process

Volunteer
Coordination
Janet Fearnside
(Acting)

- Potential Volunteer Coaching
- Ministry Leader support
- Volunteer communications
- Opportunity Information
- Volunteer celebration, acknowledgment

Operations
Jay Zwagerman

Finance
Jay Zwagerman

- Finance Policies/Procedures
- MFP, Income, and Expense Process
- Donations: counting/deposits (*Ryan Peterson, Joan Spjut*)
- Record keeping/Reporting (*PSWC support*)
- Fund Raising

Administration
Jay Zwagerman
(acting)

- Administrative Policies/Procedures
- Regulatory compliance
- HR
- Insurance

Operations Team Members:

- *Ron Kihara*
- *Michelle Noseworthy*